

CROSS-MOUNTED CLOSE-HEADROOM HOISTS



WRIGHT®

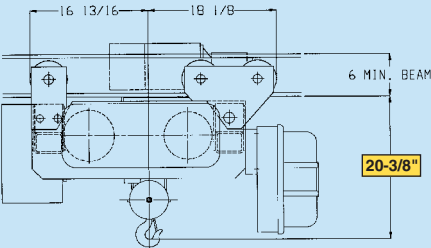
SPEEDWAY® **HOISTS**

THE NEW CENTURY SERIES®

**AVAILABLE
IN CAPACITIES OF
1 TO 5 TONS**

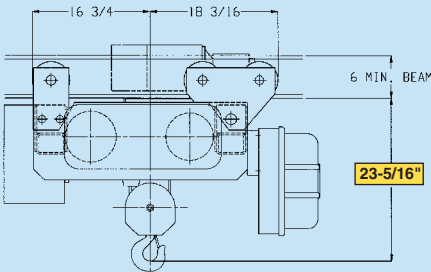
SERIES 31, 2PD

Capacity: 1 and 2 ton



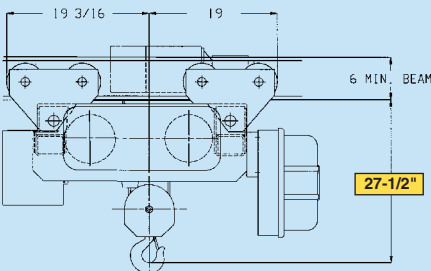
SERIES 31, 2PD

Capacity: 3 ton



SERIES 31, 4PD

Capacity: 5 ton



OPTIONAL FEATURES

- Overload cutoff
- Motor fuse holders and fuses
- Geared limit switch
- Variable speed by inverter control
- Bullard hook
- Trolley modifications & speeds
- Operational on patented track
- ACM trolleys and brakes
- Trolley drop down lugs & bumpers
- Tagline tow arm
- Epoxy paints available on application
- Audible or visual hoist overload indicator
- Running time meter
- Many other options available upon application.

SPEEDWAY[®] HOISTS

THE NEW CENTURY SERIES[®]

NEW! Cross-mounted close-headroom SPEEDWAY[®] hoists from WRIGHT[®].

Close-headroom allows for the ultimate flexibility in material handling.

SPEEDWAY[®] hoists are an excellent choice for lower volume lifting with 30 minutes of operation per hour with a maximum of 300 starts an hour as defined by Hoist Duty Class H4 of ASME HST-4M.

Compare these features:

- H-4 duty classification (ASME HST-4M)
- Machine cut, case hardened, alloy steel gears
- Single or two speed motors
- Largest oil bath in the industry
- Mechanical load brake
- U.S. manufactured motors
- Motor thermostats
- Motor brake
- Easy maintenance of gears
- Complies with ASME HST-4M both mechanically and electrically
- Steel sheaves in load block



**CROSS-MOUNTED
CLOSE-HEADROOM**



SERIES	CAPACITY	LIFT	SPEED	REEVING	HEADROOM	END APPROACH
31	1	32 - 61	15 - 20 30 - 40	2PD	20-3/8"	20-11/16"
31	2	25 - 49	15 - 20 30	2PD	20-3/8"	20-11/16"
31	3	21 - 41	15 - 20	2PD	23-5/16"	20-5/8"
31	5	19	12	4PD	27-1/2"	20-5/8"



ACCO Material Handling Solutions
 76 Acco Drive, Box 792, York, PA 17405-0792
 717-741-4863, 800-967-7333, FAX 800-715-8897
 E-mail: info@accomhs.com
www.accomhs.com